

TaiWan  
office  
台湾厂区

CHUS Taiwan



**Since 1994**

ZhongShan factorybase  
中山厂区

**Since 2004**

CHUS/HF foundry



HuNan factorybase  
湖南厂区

**Since 2009**

CHUS/HG Foundry





# WHAT WE DO?

Customised Investment castings and  
Machining solutions for you

Technically CHUS is able to produce customised metals parts and components for all industries; However, we are mainly focussed on producing and supplying highly level investment casting parts, in particular as below

1. Stainless steel specified washers
2. Variou kinds of industrial valve parts/pump parts
3. Pipe fttings
4. Marine and civil hardwares
5. Machinery/construction parts
6. Valve floating balls/handles
7. Upmarket sanitary wares

CHUS is committed to achieve customer satisfaction through manufacture and timely supply of quality investment castings as per international standards and continual improvement of quality management system

## Material

1. Stainless steel
2. Carbon steel
3. Duplex steel
4. Nickel base alloy steel

We also adhere to the following casting Standards  
ASTM , EN, BS, DIN, JIS. GB

## Our new casting range:

1. Casting weight range: 0.03kg to 500kg
2. Max Length: Up to 1.2M
3. Minimum casting wall thickness: 1.5mm
4. Casting surface roughness: Ra6.3um-12.5um
5. Monthly Capacity : 600T

## Capabilities Include:

Turning up to 14" Diameter and 36" Length  
Milling up to 24" X 24" X 24"  
Advanced machining cell for rapid prototyping  
Experienced in machining a wide range of materials  
Capable of tolerances to  $\pm 0.0002$ "  
Laser And Impression part marking  
Metric and standard threading  
Packaging per MIL standards  
Assembly and testing to meet specifications





More  
workshop  
pictures



NETON ANALYZERS



NETON ANALYZERS



更多  
工场  
信息





Foundry  
Base

铸造  
加工  
车间



**Maching centre**  
**加工車間**

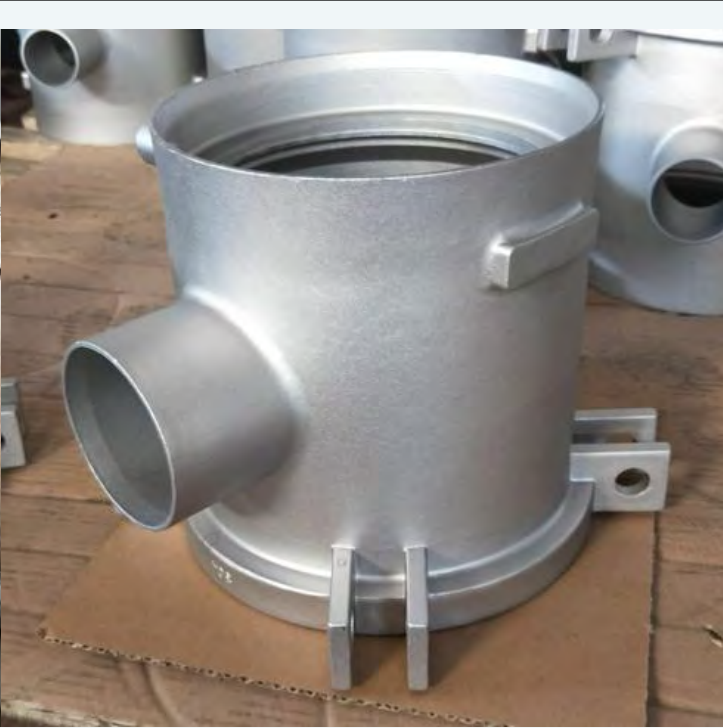
***We have  
professional  
engineers to solve solutions  
for you always,  
We are always here.***



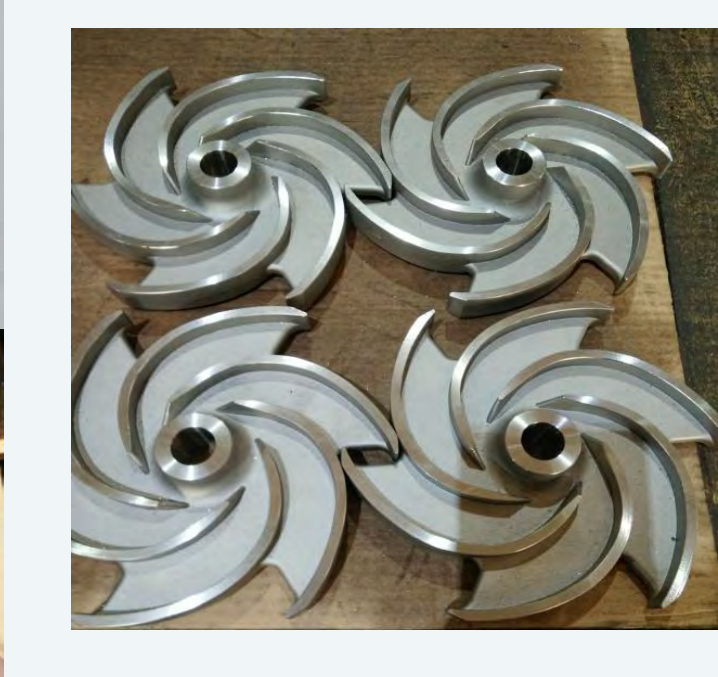




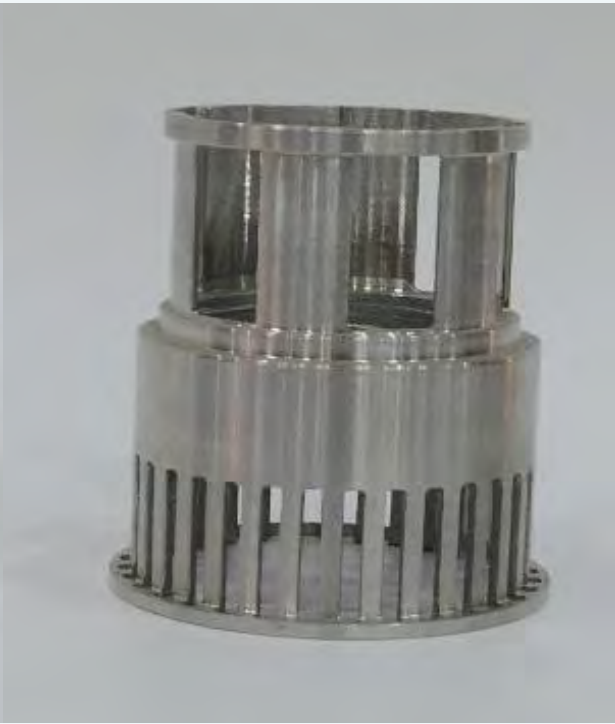




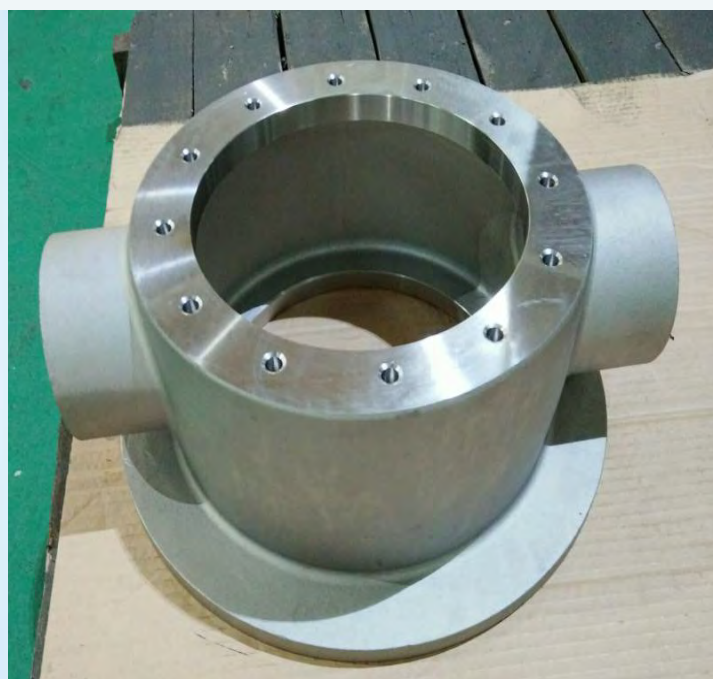
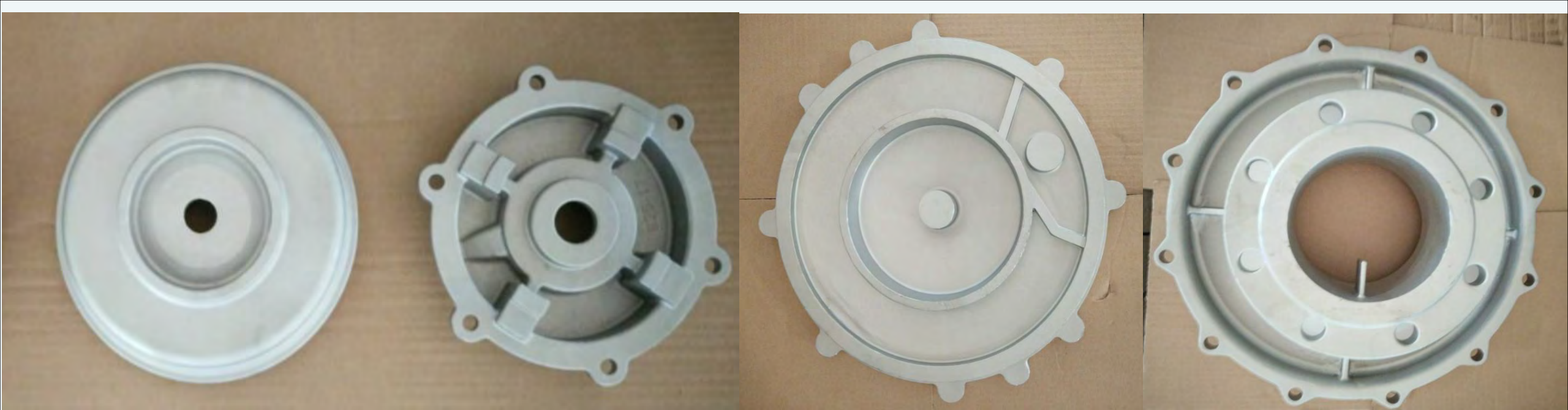




















# CHUS GROUP

## **TaiWan Factory**

CHUS STAINLESS STEEL INDUSTRY CO., LTD  
No.134-36 GangHou,Ganghou village,Alian Dist.  
Kaohsiung City 82246,Taiwan R.O.C  
Tel:886-7-6318000  
Ctc: Ms Judy  
[www.chus.com.tw](http://www.chus.com.tw)

## **ZhongShan foundry base**

ZHONGSHAN HUAFU HARDWARE PLASTIC  
PRODUCTS CO., LTD.  
Dafeng chewei Industrial zone,Jinbiao  
village,Mingzhong town,ZhongShan city,GuangDong  
province,China  
TEL:8676085571803  
Ctc:Ms Yama  
Email:[yama@cn-huagang.com](mailto:yama@cn-huagang.com)  
[www.cn-huagang.com](http://www.cn-huagang.com)

## **HUNAN foundry base**

ZiXing Huagang Investment casting Co.Ltd  
The east of Yushu road,JiangBei industrial Park;  
Economic development zone,Zixing city,HuNan  
province,Chin  
Email:[lisa@cn-huagang.com](mailto:lisa@cn-huagang.com)  
Tel:867353210310

Established: 1994 Year Kaohsiung  
Land occupied: 8000 Square meters  
Monthly Stampings: 300-500Ton  
Storage raw materials: 4000 Tons

Foundry foundation: 2004 in ZhongShan  
China  
Land occupied:240,000 Square meters  
Employees: over 500 persons  
Casting monthly output: 300Ton/month

Foundry foundation: 2013 year HuNan  
Land occupied:720,000 Square meters  
Employees: over 300 persons

***LET CHUS global Simplify  
your sourcing chain Together..***

***What you are looking  
for ,you will find HERE..***